



## MEDICAL VACUUM SYSTEM

### Oil-less Claw Vacuum Pump

#### General Description

NOVAIR USA's industry leading medical vacuum system is designed and manufactured to meet all NFPA 99 standard last edition. The system shall include multiple oil-less claw vacuum pumps coupled to a direct drive electric motor for continuous duty. Each pump is equipped with an intake filter with threaded connections, check valve, flex hoses and shutoff valve for system isolation to allow maintenance tasks. A.S.M.E. stamp air receiver with gauge and manual drain valve. The system shall include a 3-way tank bypass with pipes and ball valves in bronze or stainless steel. UL certified electrical control panel mounted and wired, controlled by PLC and HMI (electronic screen or touch screen). The entire system is 100% tested before leaving the factory. According to the NFPA 99 standard, it is required to keep one module in reserve, therefore, the capacity of the system is equivalent to the sum of the flow of the total number of modules, minus 1.

#### Claw vacuum pump, electric motor & air receiver

Oil-less rotary non-contacting two claw type vacuum pump, air cooled with no water requirements and direct driven by a C-flange, TEFC electric motor, assuring virtually maintenance-free operation. The suction-pumping chamber is oil free, sealed and separated of the oil lubricated gear box. Each pump shall include a quiet operation check valve to prevent backflow, heavy duty inlet filter, inlet and discharge flex connector, independent anti-vibration bases and shutoff isolation valve. Continuous duty capability at 28" Hg for 2 to 5 hp pumps, 27" Hg for 6.4 and 7.5 hp pumps, 25" Hg for 10 hp pumps and 23.5" Hg for 15hp pumps (at sea level).

High efficiency NEMA rated motor, C-flange TEFC, 1.15 service factor, suitable for electrical service of 208-230/380\*/400\*/460V, 3 ph, 60 Hz & 190/380 V, 3 ph, 50 Hz. (\*optional voltage)

Air receiver A.S.M.E. code stamp, rated for 200 PSIG design pressure, equipped with gauge and manual drain. The receiver comes with a 3-valve by-pass with all pipes and fittings in bronze or stainless steel, as required per NFPA.

#### Control Panel UL

The system include a UL listed centralized control panel wired and tested in a NEMA 4 enclosure, through the door disconnect switch, full voltage starter with motor circuit protector and contactor for each motor. Dual control transformer (@ 120 Vac and 24 Vac) Programming Logic Controller (PLC) with Electronic HMI 3.6" resolution 240 x 80 pixel or full color 7" Touch screen HMI resolution 800 x 400 pixel (optional) for system control. Operation mode Manual-Off-Auto and rotation test function. Automatic alternation based on first-on/first-off principle, provision for simultaneous operation or reserve back-up pump if its required. Minimum run-time operation function, with adjustable value to avoid frequent start-stop. Hour meters, run indicator, overload failure indicator and discharge temperature sensors for each pump with screen display value and high discharge air temperature shutdown alarm. Back-up transformer failure indicator. Pressure and temperature value, audible and visual alarm with dry contact for remote alarms. Back-up vacuum switch for eventual vacuum sensor failure.

- Control Panel (NE) **See picture 1.**

The control panel includes a 3.6" electronic screen (resolution 240 x 80) with keyboard for system control. It shows the hour meters run indicator and failure indicator, pressure and temperature values. Back-up pressure switch for eventual pressure sensor failure.

- Control Panel (NT) (Optional) **See picture 2.**

The control panel includes a full color 7" touch screen (resolution 800 x 400) for system control. It shows the hour meters run indicator and failure indicator, pressure values with graphics trends and high alarms indicator. Back-up pressure switch for eventual pressure sensor failure. Datalogger directs to USB memory to file parameters.

- Control Panel (NTW) with Web Communication (Optional) **See picture 2.**

It has all the components of Touch Screen control panel and additionally has Web communication to allow remote internet connectivity to monitoring the system on web-site platform with protected and personalized user and password, accessible from any computer or mobile device for full monitoring.

**VAC**  
PUMPS



**CLAW**

PRODUCT DESCRIPTION



Buffalo U.S.A  
[www.NOVAIR-USA.com](http://www.NOVAIR-USA.com)  
[Info@NOVAIR-USA.com](mailto:Info@NOVAIR-USA.com)



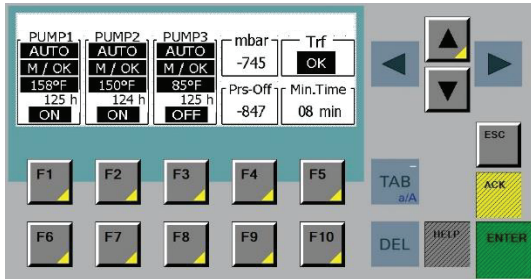


## MEDICAL VACUUM SYSTEM

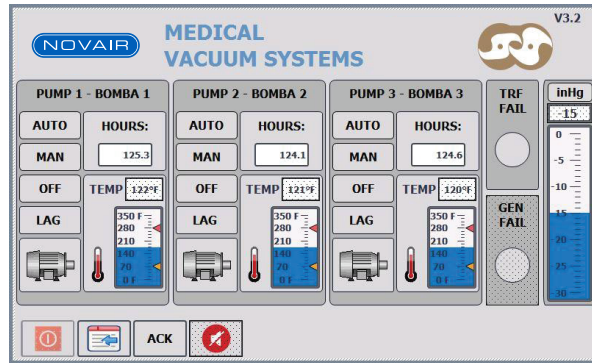
### Oil-less Claw Vacuum Pump

#### Types of control interfaces

Picture 1. Control Panel NE



Picture 2. Control Panel NT



#### Additional options available:

- Oxygen assured pumps specially prepared for use in WAGD applications. Each pump is assembled and tested in a clean environment with dedicated tools, using oxygen compatibles cleaner for each part in contact with the vacuum flow and oxygen compatible lubricant in the gear box.
- Variable frequency driver for energy saving.
- Two-component epoxy internal coating for corrosion resistance.

# VAC

PUMPS



## CLAW

# PRODUCT DESCRIPTION



Buffalo U.S.A  
[www.NOVAIR-USA.com](http://www.NOVAIR-USA.com)  
[Info@NOVAIR-USA.com](mailto:Info@NOVAIR-USA.com)

